



# The Power of Constructive Chemistry

**ENGINEERING CATALOGUE**



## Table of Contents

Company Profile .....	2
Concrete Admixtures .....	3-7
Anchors .....	8-9
Concrete Repairs .....	10-13
Connectors .....	14
Concrete Flooring .....	15
Grouts .....	16
Joint Sealant .....	17
TNEMEC .....	18-19
Protective Coatings .....	20
Surface Treatments .....	21
Waterproofing .....	22
Waterproofing Membranes .....	22-23
Waterstops .....	23-24
Geofabrics/ Geotextiles .....	25-26

## COMPANY PROFILE

### OUR VISION

To be the leader in the provision of Construction, Engineering, Industrial & Janitorial products in the Caribbean and Central American region.

### OUR MISSION

To provide products and services to our customers that add value to their business and ensure our profitability. To be a company driven by principles of Quality, Service & Technology, committed to our customers, providing a superior return to our shareholders whilst preserving the well-being and development of our employees and the preservation of the environment.

### OUR EXPERIENCE

We are committed to a tradition of providing innovative, quality products and services to meet the needs of the Engineering, Industrial, Janitorial, and other key sectors. As part of our ongoing development, we continually improve our technology and diversify our product lines to meet the evolving demands of the market.

SCL (Trinidad) Limited represents some of the world's leading companies providing superior products and a wide range of services to its diverse customer base, which includes Construction Companies, Oil/Gas Companies, General Contractors, Janitorial Companies, and Food/Beverage Manufacturing Plants.

Our close associations with the engineering and research institutions in the region keep us on the leading edge of technology and allow us to maintain our position as leaders in the industry.

With a staff of highly trained and experienced team members, SCL has developed into a streamlined business with an extensive network of distributors who provide on-hand inventory, first-class customer service, and guaranteed satisfaction. We have become known as the **Solution Provider**.



# CONCRETE ADMIXTURE

**Concrete Admixtures** are additives, other than water, aggregates, cement, and fiber reinforcement, added to concrete, mortar, or grout during mixing to modify their properties in the plastic or hardened state. These additions can enhance workability, improve durability, control setting times, and more.

## CONCRETE FIBRES

**MACRO  
SYNTHETIC FIBRE**  
Adfil Durus Easy Finish

Durus Easy Finish has been developed to facilitate effective post-crack residual flexural strength, crack control whilst allowing a high-quality surface finish and is suitable for use in all concrete mixes for the most demanding applications.



**MICRO  
SYNTHETIC  
MONOFILAMENT  
FIBRE**  
Adfil Fibrin XT

Adfil Fibrin XT is part of a range of monofilament fibres designed to reduce the occurrence of plastic shrinkage and plastic settlement cracking, whilst enhancing the surface properties and durability of hardened cementitious products.



## ACCLERATORS

**DYNaplas VP**

A non-chloride free accelerating admixture designed to deliver high earlier and faster setting strengths.

**DYNaplas  
QUICKSET**

An accelerating admixture based on calcium chloride. Quickset enhances the early stages of cement hydration, producing more rapid stiffening and hardening.

**CONPLAST NC**

Conplast NC is a chloride-free accelerating admixture based on a combination of formate and nitrite salts. It is supplied as a straw-colored solution that instantly disperses in water.

## RETARDERS

**DYNaplas R 350BD**

DYNaplas R 350BD is an aqueous solution formulated to improve workability and to temporarily stop the hydration of cementitious mixtures. DYNaplas R 350BD can be dispensed directly to mortar and concrete mixtures, and is formulated to conform to ASTM C494 Type B and D.

<b>CONPLAST RP 264</b>	Conplast RP 264 is a versatile concrete admixture designed to enhance workability, cohesion, and set retardation, allowing for increased workability without compromising strength. It also enables the production of higher-strength concrete without sacrificing workability or requiring additional cement.
<b>CONPLAST R</b>	Conplast R disperses the fine particles in the concrete mix, enabling the water content of the concrete to perform more effectively. The initial hydration of the cement is also delayed, resulting in a delay in the setting time of the concrete with no adverse effect on subsequent stiffening and strength gain



### AIR ENTRAINERS

<b>CONPLAST AE 300</b>	Conplast AE300 is a chloride-free air-entraining admixture based on neutralized vinsol resin. It is supplied as a brown solution that instantly disperses in water.
<b>CONPLAST PA 21</b>	CONPLAST PA21 produces air-entrained concrete without the usual loss of strength or additional cement content usually required.
<b>DYNAplas AE21</b>	DYNAplas AE21 is a chloride-free air-entraining admixture based on selected sugar-reduced lignosulphonates and compatible surface-active agents.

### AIR DETRAINERS

<b>DYNAplas ADA</b>	DYNAplas ADA is a liquid admixture formulated to minimize foam formation and reduce air content in cementitious mixtures such as concrete, mortar, and grouts prior to hardening.
---------------------	---

### SUPERPLASTICIZERS AND HIGH RANGE WATER REDUCERS

<b>CONPLAST SP 430</b>	Produces a highly fluid, self-leveling concrete with very high early & ultimate strength, reduced permeability, and reduced segregation.
------------------------	--

<b>DYNAplas SP 449F</b>	DYNAplas SP-449F is a powerful multifunctional superplasticiser, that, depending on the dosage used, performs effectively as a Normal Water reducing Admixture (ASTM C-494 Type A) as a High Range Water Reducer, as well as a powerful superplasticiser. (ASTM C-494 Type F)
<b>DYNAplas PC 5-21</b>	DYNAplas PC 5-21 is specially formulated to be a robust yet versatile admixture that will meet the exact demands of most concrete requirements.
<b>DYNAplas PC-X</b>	DYNAplas PC-X is a unique Workability Retaining Admixture, formulated to extend the slump life of concrete with minimal impact on set time and early age strength, and can be used for moderate and high slump concrete mixes, self-consolidating concrete, precast/prestress, and ready-mix concrete.



### HIGH-RANGE WATER REDUCERS AND RETARDERS

<b>CONPLAST SP 423</b>	To produce highly workable and flowing concrete, with a very high degree of workability retention. Ideal for readymix operations where slump retention is required.
<b>CONPLAST SP 432 MS</b>	Conplast SP432MS is a chloride-free, superplasticising admixture based on selected sulphonated naphthalene polymers. It is supplied as a brown solution that instantly disperses in water.
<b>DYNAplas SP 440G</b>	DYNAplas SP-440G is a powerful multifunctional superplasticiser, that works as a Retarding, Normal Water Reducing admixture, a Retarding, High Range Water Reducer, as well as a powerful Superplasticiser.

<b>FOAMING AGENTS</b>	
<b>DYNApas Cellucem 300</b>	DYNApas Cellucem 300 is a concentrated solution of selected surfactants. When used with a SCL Cellucem Foam Generator and a suitable water supply, DYNApas Cellucem 300 produces a consistent pre-foam that is stable under alkaline conditions and ideal for use in the production of foamed concrete.
<b>WATERPROOFING ADMIXTURES</b>	
<b>DYNApas WP-S</b>	DYNApas WP-S is an integral Waterproofing admixture, based on Fatty Acids and Hydrophobic ingredients. It is a white liquid, instantly dispersible in water, that improves the water resistance and reduces the porosity of structural concrete.
<b>DYNApas WP-C</b>	DYNApas WP-C is an integral concrete waterproofing admixture based on crystalline and other proven water-resistant and densifying technologies. DYNApas WP-C has the integral ability to heal and waterproof cracks of up to 0.4mm by the growth of permanent crystal formation.
<b>CONPLAST WP 402</b>	Conplast WP402 is designed for use as an integral water resisting admixture for ready-mixed concrete. It is based on a unique blend of fatty acid salts and hydrophobic materials, supplied as a white, chloride-free liquid.
<b>CONPLAST PROPLAIN X421</b>	Conplast X421 is a formulated blend of inorganic plasticisers. It is supplied as a red coloured liquid instantly dispersible in water.
<b>UNDERWATER PLACEMENT</b>	
<b>CONPLAST UW</b>	An admixture to be used in conjunction with CONPLAST 430 to produce concrete that is flowing, highly workable and cohesive, and is resistant to "wash-out" of the fines and cement when placed underwater, in moving or tidal water.
<b>FLOWABLE FILL</b>	
<b>Dynaplas CLSM</b>	Dynaplas CLSM is a ready-to-use liquid admixture designed for Controlled Low-Strength Material (CLSM) concrete. It increases and stabilizes air content, improving flowability, workability, and ease of placement, while maintaining controlled strength and decreasing density for efficient backfill and trench-fill applications.
<b>CORROSION INHIBITORS</b>	
<b>Conplast CN</b>	Conplast CN admixture is based on calcium nitrite. It is supplied as a pale straw coloured solution that instantly disperses in water. The product has been neutralized for good slump retention.
<b>DYNApas CI</b>	DYNApas CI is a concrete Admixture based on Calcium Nitrite, which is proven to inhibit the corrosion of steel in reinforced concrete. DYNApas CI contains a minimum of 30% Calcium Nitrite by volume.

## RHEOLOGY MODIFIERS

<b>DYNAplas RMA 400</b>	DYNAplas RMA 400 is a high-performance liquid rheology modifying admixture, specially developed to enhance concrete rheology properties, reducing settling and segregation
-------------------------	--

## BLOCK ADMIXTURES

<b>DYNAblock U-150</b>	DYNAblock U-150 is a unique concrete admixture designed to improve the workability and rheology of zero-slump concrete mixes and produce a moderate swipe. Faster machine feed times are made possible by DYNAblock U-150's plasticizing action. Other benefits include improved cement hydration, increased early strengths, and denser surface texture.
<b>Conplast Blockspeed</b>	Conplast Blockspeed is a chloride-free accelerating admixture specially formulated for optimum performance across a wide range of static and mobile (egg-laying) block paving and masonry production equipment. It is supplied as a straw-colored solution which instantly disperses in water.
<b>DYNAblock WEC</b>	DYNAplas WEC is a liquid admixture designed to reduce efflorescence and improve waterproofing in concrete blocks and pavers. It limits moisture movement and salt migration by densifying the concrete matrix, resulting in cleaner, more durable units with improved long-term appearance and water resistance.

## MORTAR ADMIXTURES

<b>Cebex 112</b>	Improves the workability and trowelling properties of sand/cement mixes. CEBEX 112 improves bond strengths and assists in reducing or eliminating shrinkage cracking caused by evaporation.
<b>Conplast Mortarplas</b>	Conplast Mortarplas is supplied as a light brown colored liquid which mixes readily with water in any proportions. It is based on polymerized resins and is free from calcium chloride and similar salts.



## ANCHORS

Simpson Strong-Tie has been a leading player in the adhesive market since 1994, offering a comprehensive portfolio that includes anchoring adhesives for concrete and masonry, crack repair and injection systems, mechanical anchors, powder-actuated fastening solutions, and carbide drill bits.

### CHEMICAL ANCHORS

Chemical, or resin, anchors are specialized fastening systems that bond steel studs, bolts, and other fixtures into concrete and masonry using high-performance resin adhesives. They provide exceptional load capacity and durability, often achieving bond strengths that exceed those of the surrounding base material.

#### SIMPSON ET-3G CHEMICAL ANCHOR

ET-3G is a two-component, high-solid, epoxy-based system ideal for general anchoring of threaded rod and rebar into concrete (cracked and uncracked) and masonry (cracked and uncracked).

**ET 3G 10**

**ET 3G 22-N**

#### DYNA SET

Dyna Set is a polyester resin grout designed for high-strength, corrosion-resistant anchoring of bolts and bars into concrete, rock, masonry, or brickwork, where a high speed of application and early loading is essential.

**TYPE:** Chemical



### MECHANICAL ANCHORS

Our high-performance steel mechanical expansion and screw anchors are versatile, reliable solutions suitable for a wide range of substrates including brickwork, blockwork, stone, concrete, and masonry, making them ideal for both light and heavy-duty applications such as fixing battens, timber structures, racking, steel fabrications, and machinery.

#### TITEN HD

The Titen HD is a patented, high-strength screw anchor for concrete and masonry. The self-undercutting and non-expansion characteristics of the Titen HD make it the ideal anchor for structural applications, even at minimum edge distances and under reduced spacing conditions.



### DROP-IN ANCHOR

Drop-in anchors are internally threaded, deformation-controlled expansion anchors with a preassembled expander plug, suitable for flush mount applications in solid base materials.



### NAIL ON PIN DRIVE ANCHOR

Nylon and Zinc Nailons are low-cost anchors for light-duty applications under static loads.



### SLEEVE ALL

Sleeve-Alls are pre-assembled expanding sleeve anchors for use in all types of hollow and solid base materials. These anchors are available in acorn, hex, rod coupler, flat or round head styles for a wide range of applications.



### SPRING WING TOGGLE BOLT

The Spring Wing Toggle Bolt is designed for installation in hollow wall construction consisting of such base materials as gypsum wallboard and ungrouted concrete masonry units.



### TITEN CONCRETE AND MASONRY SCREW

Titen screws are 3/16" and 1/4" diameter masonry screws for attaching all types of components to concrete and masonry. Available in hex and Phillip head designs in three colors.



### STRONG-BOLT 2 WEDGE ANCHOR

This is a non-bottom bearing, wedge-style expansion anchor for use in solid concrete or grout-filled masonry.





## CONCRETE REPAIR

### BONDING AGENTS

Bonding agents play a vital role in achieving a strong, durable bond between new and existing concrete, particularly in repair applications. They enhance adhesion without the need for mechanical fasteners; however, their performance depends heavily on the soundness, integrity, and cleanliness of the existing substrate. Proper surface preparation and good concrete practices are essential to ensure optimal bonding results.

#### NITOBOND AR

NITOBOND AR and NITOBOND HAR are single-component white, milky emulsions based upon modified acrylic-type resins.

#### DYNA BOND PVA

Dyna Bond PVA multipurpose adhesive is supplied as a ready-to-use white liquid based on a polymerized resin emulsion.

#### DYNA BOND SBR

Dyna Bond SBR is a modified styrene butadiene rubber emulsion that is supplied as a ready-to-use white liquid. It is designed to improve the quality of site-batched cementitious mortars and slurries.

### CEMENTITIOUS MORTARS

Cementitious mortars are pre-mixed dry blends that require only the addition of water on site, producing a versatile and durable repair mortar suitable for a wide range of applications.

#### RENDEROC GP

Renderoc GP is a shrinkage-compensated dry blended mix of special cement and aggregates. Designed as a general-purpose grade, Renderoc GP can be applied by trowel, or by wet or dry spray process.

**TYPE:** General Purpose

#### RENDEROC HB 40

Renderoc HB is a fibre-reinforced material which is used to repair damaged and deteriorated concrete.

**TYPE:** High Build

#### RENDEROC PLUG

For patching, plugging, caulking, joint filling, pointing and waterproofing of concrete segments, concrete and brick tunnels, sewage systems, pipes, basements, wells, foundations, etc.

**TYPE:** Water Plugging

### RENDEROC RS XTRA

RENDEROC RS is a blend of dry powders and graded aggregates that requires only the addition of clean water to produce a highly consistent, high-strength, free-flowing repair concrete that self-compacts.

**TYPE:** Rapid Setting

### RENDEROC S

For the reinstatement of large areas of concrete and small, localized patch repairs.

**TYPE:** Abrasion Resistant

### RENDEROC LA

Renderoc LA is supplied as a ready-to-use blend of dry powders, which requires only the site addition of clean water to produce a free-flowing, shrinkage-compensated micro concrete suitable for large volume concrete repairs at nominal thicknesses more than 50 mm.

**TYPE:** Micro Cement

## CORROSION CONTROL

Corrosion control products are used to provide galvanic protection to steel reinforcement, helping to prevent future deterioration caused by the formation of incipient anodes.

### GALVASHIELD CC

GALVASHIELD CC is a discreet galvanic anode embedded within a specially formulated cementitious mortar, used to control corrosion in sound but contaminated concrete.

**TYPE :** Anode

### GALVASHIELD XPT

Galvashield XPT is a sacrificial metal anode embedded with a specially formulated cementitious mortar, which prevents incipient anode-induced corrosion around the boundary of patch repairs.

**TYPE:** Anode

### GALVASHIELD LJ

Galvashield LJ is designed to reinstate and actively protect reinforced concrete/ structural steel elements subject to the most severe exposure conditions.

**TYPE:** Zinc Mesh/ Jacket

### NITOPRIME ZINCRICH

Nitoprime Zincrich is the required anti-corrosive primer for use with the Renderoc concrete repair system.

**TYPE:** Anti Corrosion Primer

# CONCRETE REPAIR

## CRACK REPAIR

Simpson Strong-Tie's new Crack Repair Epoxy Systems are designed to simplify concrete crack injection and improve reliability, reducing both the time and cost associated with traditional repair methods.

### CI-SLV

CI-SLV super-low-viscosity structural injection epoxy is a two-component, high-modulus, high-solids, moisture-tolerant epoxy specially designed for pressure injection, gravity feeding and flood coat filling of concrete cracks when substrate temperatures are between 60°F (16°C) to 90°F (32°C).

### CI-LV

CI-LV low-viscosity structural injection epoxy is a two-component, high-modulus, high-solids, moisture-tolerant epoxy specially designed for pressure injection, gravity feeding and flood coat filling of concrete cracks and for increasing the bond between freshly placed repair mortars or concrete mixes and existing concrete when substrate temperatures are between 40°F (4°C) to 90°F (32°C).

### SIMPSON CRACK PAC FLEX H20

Simpson Crack Pac Flex 20 is a single component hydrophobic polyurethane injection resin designed to seal leaking cracks, voids or fractures in concrete or solid masonry. The polyurethane is packaged in the cartridge and an accelerator is packaged in the nozzle.

**TYPE:** Low Viscosity





# CONCRETE REPAIR

## EPOXY MORTARS

Epoxy mortars provide a fast and durable solution for concrete reinstatement, particularly in chemically aggressive environments, due to their rapid setting characteristics and excellent adhesion.

<b>NITOMORTAR HB</b>	
<p>For fast and permanent reinstatement of concrete, particularly where resistance to chemicals is required. NITOMORTAR HB can be used for small, localized patch repairs, and because of its lightweight nature, is ideally suited for use in vertical and overhead locations and for emergency repairs where fast strength gain is important.</p>	
<p><b>TYPE</b> High Build</p>	<p><b>SIZE &amp; YIELD</b> Three-part mixture available in 2.5 and 8.0 litre packs. To be used in conjunction with Nitoprime 25 or 28.</p>
<b>NITOMORTAR S</b>	
<p>For fast and permanent reinstatement of concrete, particularly where high strength abrasion resistance and resistance to chemicals is required. Nitomortar S is designed for horizontal use but can be applied vertically, although generally in thinner sections.</p>	
<p><b>TYPE</b> High Strength</p>	<p><b>SIZE &amp; YIELD</b> Three-part mixture available in 2.5 and 8.0 litre packs. To be used in conjunction with Nitoprime 25 or 28.</p>

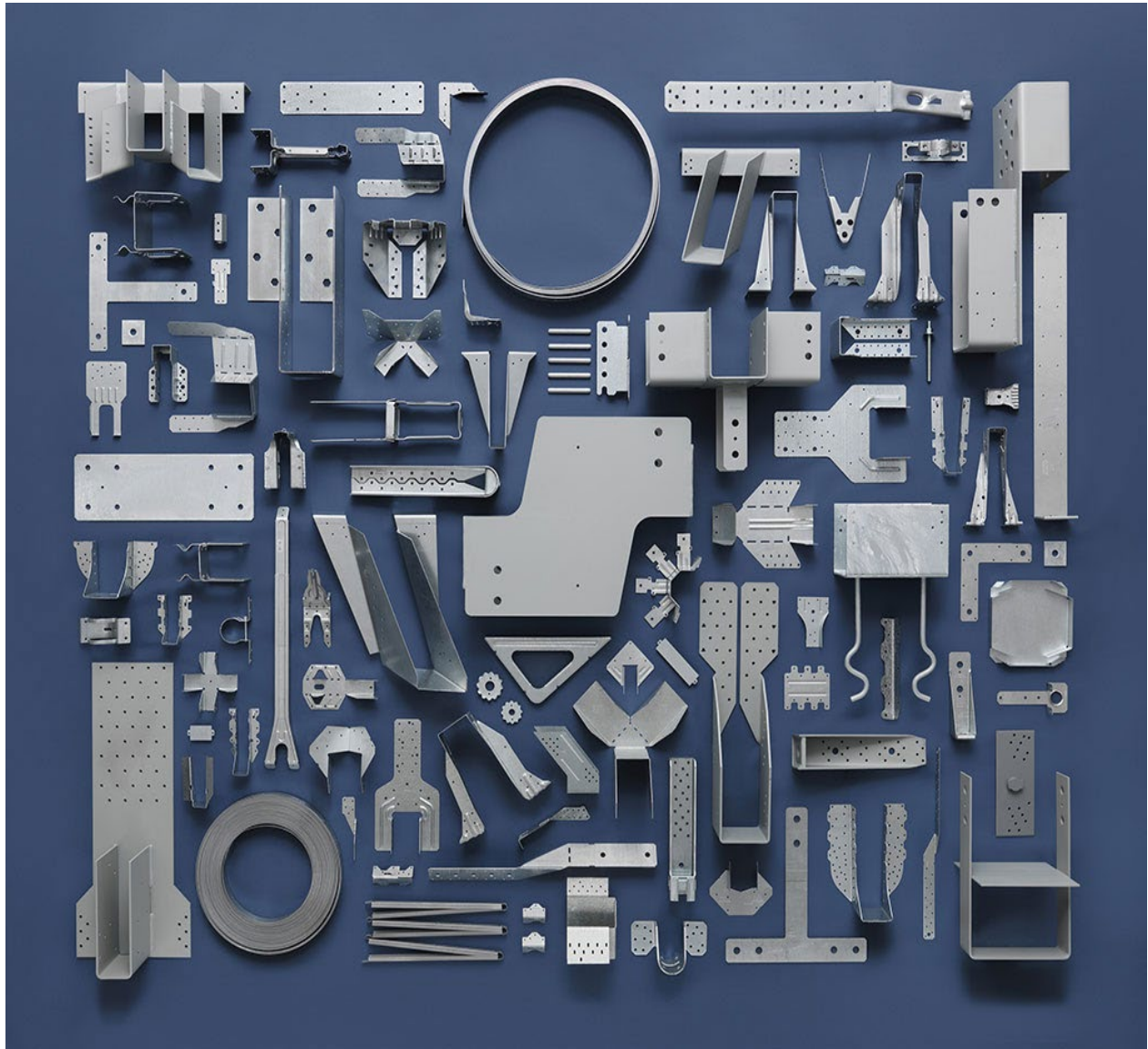


## CONNECTORS

Connectors are essential steel components that strengthen a home's structural frame by securely tying joints together, providing increased resistance to seismic activity, wind, and other applied loads. Unlike simple nail joints, connectors significantly reinforce connection points, resulting in a more durable and resilient structure.

### H2.5AZ

Designed to provide seismic and wind ties for trusses or joints, the versatile line may be used for general tie purposes, strongback attachments, and as all-purpose ties where one member crosses another.



## CONCRETE FLOORING

SCL offers a comprehensive range of flooring products designed for self-leveling, dust proofing, curing, and hardening concrete surfaces. These solutions are suitable for commercial, industrial, and residential applications, delivering durable and high-performance floors across a variety of environments.

### DYNEX 1004

DYNEX 1004 is a cementitious Polymer Modified Tile Adhesive perfect for the installation of Porcelain, Ceramic, Marble and Glass tiles on horizontal or vertical surfaces. Dynex 1004 meets and exceeds the requirements of ANSI A118.1 and ANSI A118.4.

### NITOFLOP HARDTOP

Nitoflor Hardtop provides a highly abrasion-resistant surface to fresh concrete floors by the dry shake, trowel in method, which ensures that the hard-wearing surface bonds monolithically to the base concrete.

### SCL LEVEL CEM GP

SCL- Level Cem is a blend of specially selected cement, graded aggregates, polymers and additives. It is supplied as a dry, grey powder which requires only the addition of water to produce a free fluid material. This provides ideal levelling material for levelling uneven, in situ or precast concrete floors.

### SPEC-CRETE SUPERSEAL B66

Superseal B66 is a solvent based acrylic floor sealer. Ideal for use in industrial applications. Superseal will provide a hardwearing attractive, dustproof surface.



## GROUTS

### CONBEXTRA EPR

Conbextra EPR is a three-part 100% solids epoxy grout, designed for free-flowing dynamic grouting where a variety of grout thicknesses will be encountered.

### CONBEXTRA GP

Conbextra GP is a general-purpose cementitious grout. It can be used from a free flow to a dry pack consistency, with only a variation of the water content.

### CONBEXTRA HF

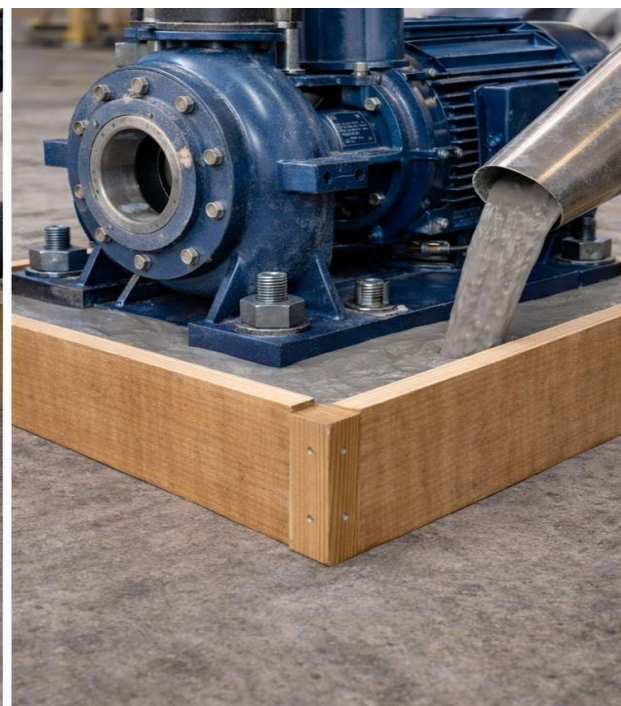
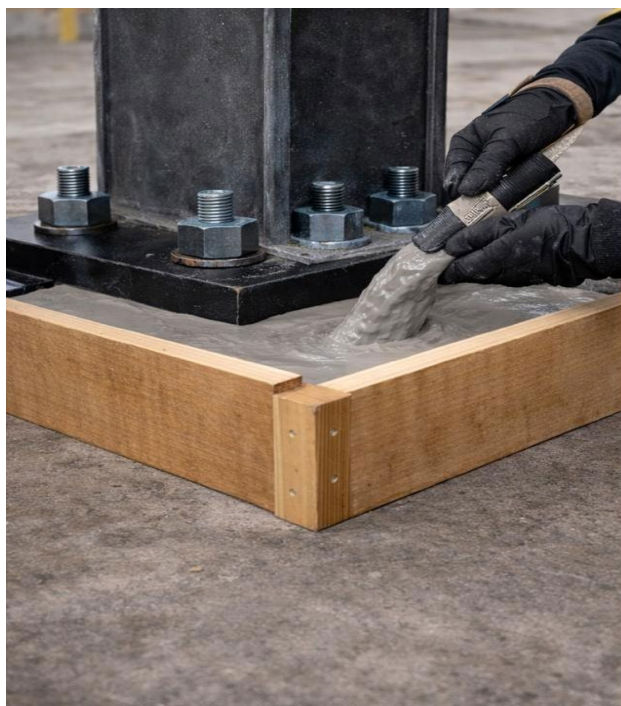
Conbextra HF is a high-performance dual shrinkage-compensated cementitious grout. It is a premium product used for free-flow grouting over a range of application consistencies.

### CONBEXTRA UW

Conbextra UW is used for free flow or pumped grouting applications underwater or in tidal zones. It is designed to give no significant 'wash out' in the cement phase. Applications include bridge columns, quay pillars, concrete piling, slipways and dams.

### CONBEXTRA TS

Conbextra TS is supplied as a ready to use dry powder. The addition of a controlled amount of clean water will produce a fluid, aggregate filled grout for pouring or pumping into large voids between structural elements.



## JOINT SEALANT



### COLPOR 200 PF

Cold-applied, pourable joint sealant for concrete pavement areas. Ideal for concrete roads, airports, car parks, etc.

### DYMONIC 100

Dymonic 100 is a durable, flexible sealant that offers excellent performance in moving joints and exhibits tenacious adhesion once fully cured. Typical applications for Dymonic 100 include expansion and control joints, precast concrete panel joints, perimeter caulking (windows, doors, panels), aluminium, masonry, and vinyl siding.

### EXPANDAFOAM

For use as a joint filler and backer and also as a bond breaker and former for elastomeric sealants. Prevents three-sided adhesion of the sealant.

### SPECTREM III

A general-purpose, low-modulus, high-performance, one-part, neutral-curing, non-staining, construction-grade silicone sealant.

### THIOFLEX 600

Two-part high-performance long-life joint sealant, for expansion joints in brickwork, concrete and stone.

### TREMFLEX 834

Tremflex 834 is a pure acrylic latex sealant formulated to provide a fast-setting pliable seal with minimal shrinkage.

### TREMSIL 200

Tremsil 200 is a one-part, acetoxy silicone sealant. Tremsil 200 cures to a flexible rubber when exposed to moisture present in the air.

### TREMSIL 600

Tremsil 600 is a one-part, medium modulus, neutral cure silicone sealant. The sealant cures to a flexible rubber when exposed to moisture present in the air.

### VULKEM 116

Vulkem 116 is a one-part moisture curing, gun grade polyurethane sealant. Vulkem 116 is durable, flexible and offers excellent performance in moving joints. Vulkem 116 does not require a primer on most construction materials.

### VULKEM 45

Vulkem 45 is a one-part moisture curing, pour grade polyurethane joint sealant. Vulkem 45 does not require a primer on most construction materials.

### CONFLEX

CONFLEX is a proprietary wood fiber blend of treated wood fibers and additives which yields flexible, easy-to-handle boards. Stronger and lighter than others expansion joint filler compounds, it's easy to install, resists breakage, cuts cleanly and is easily held in position during pouring.



## TNEMEC

TNEMEC Company is renowned in the construction industry for delivering reliable, high-performance coatings supported by unmatched technical expertise. Their solutions serve a wide range of markets, including water and wastewater treatment, water storage tanks, architectural projects, industrial facilities, and processing and manufacturing operations.

### ENDURA-SHIELD SERIES 73

**Uses** Intermediate Coats, Original Equipment Manufacturer (OEM), Top and Finish Coats

**For** Steel, Masonry & Stucco, Concrete, Other

**Generic Description** Aliphatic Acrylic Polyurethane

**Finish** Semi-gloss

### EPOXOPRIME 201

**Uses** a stand alone one-coat floor sealer

**For** Concrete, wood and drywall

**Generic Description** Modified Polyamine Epoxy

**Finish** Clear

### HI BUILD EPOXYLINE SERIES 66

**Uses** Intermediate Coats, Primer and/or Block Fillers, Top and Finish Coats

**For** DryWall and Gypsum, Steel, Masonry & Stucco, Concrete, Other

**Generic Description** Polyamide Epoxy

**Finish** Satin

### EVERTHANE SERIES 248

**Uses** Flooring, Top and Finish Coats

**For** Concrete

**Generic Description** Aliphatic Moisture Cured Urethane

**Finish** Semi-gloss

### SERIES N222 DECO-TREAD

**Uses** Primer, broadcast, slurry/broadcast, mortar, grout coat, metallic color coat, and topcoat.

**Generic Description** Modified Polyamine Epoxy

**Finish** Gloss

### DECO CLEAR 284

**Uses** Intermediate Coats, Flooring, Top and Finish Coats

**For** Concrete

**Generic Description** Modified Polyamine Epoxy

**Finish** Gloss. The texture of the finished surface depends on the number of coats applied.

### TNEMEC GLAZE 282

**Uses** Provides improved aesthetics and additional protection against abrasion, impact, and most acids, alkalis and solvents.

**For** Coating for walls, floors and other surfaces

**Generic Description** Polyamine Novolac Epoxy

**Finish** Solvent-resistant colored novolac glaze

### Tnemec-Glaze 281

**For** A high gloss glaze- like coating for concrete floors

**Generic Description** Modified Polyamine Epoxy

**Finish** Variety of colours

## PROTECTIVE COATINGS

SCL offers a broad range of protective coatings suitable for commercial, industrial, and residential applications. These coatings can be applied to diverse substrates—including masonry, steel, concrete, and aluminum—and serve as a foundation for final finishes such as painting, polishing, or glazing.

### DEKGUARD ELASTIC

**Description:** The product is also suitable for protecting other cementitious substrates and masonry.

**Uses:** All types of structures, including those in coastal environments

### DEKGUARD S

**Description:** Dekguard S is an aliphatic acrylate, solvent-based protective coating, providing outstanding resistance to aggressive elements, UV light, and rain.

**Uses:** All types of concrete structures, especially those in aggressive marine and coastal environments.

### GALVAFROID

**Description:** Galvafroid zinc-rich cold galvanizing coating is formulated as an easily applied protection against corrosion on all ferrous metals. Galvafroid has a mid-grey, matt finish.

**Uses:** Protects ferrous metals against rust  
Suitable as a primer or self-finish  
Easily applied by brush or roller

### NITOCOTE SN 522

**Description:** A single-component, penetrating silane-siloxane which penetrates porous substrates and then reacts to produce a bonded water repellent lining.

**Uses:** To provide a water repellent surface on exterior building surfaces such as brickwork, plaster, concrete and natural stone

## SURFACE TREATMENTS

Surface treatments, or surface engineering, involve modifying the surfaces of engineering materials to control friction and wear, enhance corrosion resistance, adjust physical properties, alter dimensions, or change appearance. Common surface treatments fall into two main categories: those that coat or cover the surface and those that modify the surface itself.

### SCL SILICATE SOLUTION

SCL Silicate Solution is a clear water-soluble premium sodium silicate concrete hardener that assists in the curing, hardening and dustproofing of concrete. It is easy to apply, leaves no residues and dries quickly.

### CONCURE WB

CONCURE WB is used to provide a membrane on the surface of newly placed concrete to retain moisture for effective curing to take place.

### KONKLEEN

KONKLEEN is a combination of acid-based material, corrosion inhibitors, and dispersing agents. It is used for the removal of mortar and plaster runs, droppings and stains from brickwork and concrete surfaces.

### SPEC-CRETE C.R.A

Spec-Crete C.R.A. is a unique blend of oils, surfactants, and carriers which, when combined, have release properties vastly superior to conventional form oil. Spec-Crete C.R.A is supplied as a dark brown liquid, ready for direct application.

### SCL AQUATARD

SCL AQUATARD is a water-based, chemical surface retarder, specially formulated for tropical environments. SCL AQUATARD will produce exposed aggregate concrete, both face up, or face down, and is ideal for precast, casting 11Grano11 toppings, or exposed aggregate surfaces for cold joint applications.

### SILICATE SOLUTION

SCL SILICATE SOLUTION is a clear water- YIELD soluble, premium sodium silicate concrete hardener that assists in the curing, hardening, and dustproofing of concrete. It is easy to apply, leaves no residue and dries quickly.

### REEBOL

Reebol is specially formulated blend of mineral oils and chemicals having release properties which are superior to those of conventional mould oil.



## WATERPROOFING

Cementitious waterproofing uses cement-based compounds combined with additives, supplied in a dry, pre-packaged form. On site, the mixture is blended with water and liquid bonding agents to achieve a workable, concrete-like consistency, which is then applied to surfaces to form a durable, waterproof barrier.

### INTEGRA

Integra is an economical cementitious coating system for waterproofing concrete against positive and negative hydrostatic heads of water.

**TYPE:** Crystalline

### NITOCOTE CM-210

Nitocote CM-210 is a two-part polymer modified cementitious coating that has been especially developed for use as an internal coating for waterproof potable water retaining structures.

**TYPE:** Membrane

## WATERPROOFING MEMBRANES

SCL offers a range of waterproofing membranes available in both sheet form and liquid-applied systems, depending on the product type, to provide effective protection for various applications.

### NITOPROOF 30 HL

NITOPROOF 30 HL is a rubber reinforced bitumen emulsion. It provides a highly effective waterproof membrane and can be used in a wide range of applications, such as providing a damp proof membrane in 'sandwich construction'; dual purpose waterproof and curing compound.

**TYPE:** Bituminous

### PARASEAL

Paraseal is a sheet waterproofing membrane manufactured to control thicknesses of 150 mils to 200 mils of tough, high-density polyethylene (HDPE) and expandable, quality granular Bentonite

**TYPE:** Bentonite / HDPE

### TREMPROOF 250 GC

A rapid-curing, high-solids, VOC-compliant modified polyurethane waterproofing membrane that can be applied to damp and green concrete. TREMProof® 250GC is a one-part moisture-curing elastomer available in three viscosities: self-leveling (SL), roller (R) and trowel. (Trowel grade is intended for detailing work only.)

**TYPE:** Fluid-Applied Elastomeric

### VULKEM 350-345-346

Vulkem 350/345/346 is a modified polyurethane Traffic Deck Coating System composed of a base coat (350), heavy duty Intermediate coat (345) and a topcoat (346).

**TYPE:** Polyurethane (Vehicular traffic)

**VULKEM 350-351**

Vulkem 350/351 is an attractive composite waterproofing system comprised of tough-curing liquid polyurethane. It cures to form a rubber membrane surface that provides a lasting eye-appealing and easy-to-clean coating. Non-skid surfaces for pedestrian traffic features use of an aggregate-laden top membrane for surest footing.

**TYPE:** Polyurethane ( Pedestrian Traffic)

**VULKEM 350 NF/ TREMCO EPOXY PRIMER**

Vulkem® 350NF/Tremco® Epoxy Primer (EP) is an under tile waterproofing system comprised of a tough-curing liquid polyurethane base coat and highly durable, low-modulus epoxy topcoat.

**TYPE:** Under Tile Waterproofing System

**VULKEM 450-451**

Vulkem 450/451 System combines a flexible and durable urethane basecoat (Vulkem 450) with a ultraviolet and ozone resistant topcoat (Vulkem 451) to yield an elastomeric and waterproofing seamless coating

**TYPE:** Ponds/ Pools

**VULKEM 801**

Vulkem 801 is a liquid applied one part polyurethane coating system that has been formulated to have high tensile strength, tear strength and elongation.

**TYPE:** Polyurethane (Non-Traffic Area)

**WATERSTOPS**

A water stop is a key component embedded within concrete joints to ensure watertightness. They are commonly manufactured from extruded plastics, such as PVC or thermoplastic elastomeric rubber (TPER); formed metals, including stainless steel, copper, or carbon steel; or extruded thermoset materials, such as natural rubber, styrene-butadiene rubber, or neoprene rubber.

**SUPERCAST REARGUARD S**

PVC water stops cast into and across in-situ concrete joints to prevent ingress of or loss of water through joints in water retaining or water excluding structures. REARGUARD S is externally placed for both construction and expansion joints.

**TYPE:** PVC

**SUPERCAST SW**

Typical use areas include joints between old to new concrete, where the designed water stop has been forgotten or omitted, or in difficult bends and angles where the flat profile of a PVC water stop cannot work. SUPERCAST SW 10 is used where there is reinforcement crossing the joint. SUPERCAST SW 20 is used where there is no continuous reinforcement.

**TYPE:** Swellable

### SUPERCAST SW X

SUPERCAST SW X can be used as an adhesive for bonding Supercast SW strips or as a problem-solving hydrophilic in difficult access areas (eg. Sealing between rough surfaces, around rubber and plastic water stops prior to concreting, etc.)

**TYPE:** Swellable

### SUPERSTOP

A multiple composite waterstop which combines the strength and toughness of conventional waterstop with the self-sealing ability of bentonite

**TYPE:** Swellable

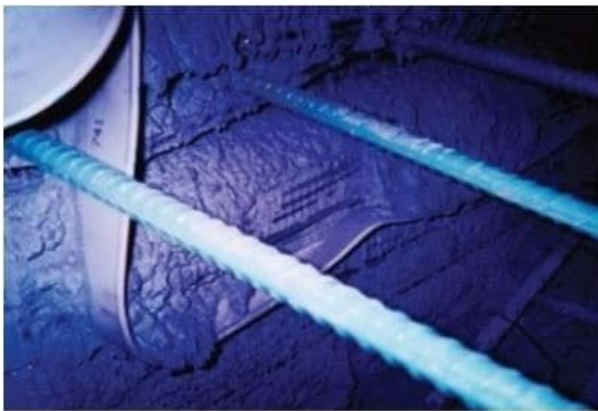
### DURAJOINT

Designed for use in concrete construction containing joints, one side of which is subject to hydrostatic pressure. DuraJoint is used as a barrier within the joint to prevent the passage of liquid through or across the joint. It is embedded in the concrete on both sides of the joint. It is designed to accommodate lateral and transverse movements which can cause a joint to open, close or misalign. Sizes available are 6" & 9'

### SUPERCAST HYDROFOIL

PVC waterstops cast into and across in-situ concrete joints to prevent ingress of or loss of water through joints in water retaining or water excluding structures. SUPERCAST HYDROFOIL is centrally placed for both construction and expansion joints

**TYPE:** PVC





## Geofabrics / Geotextiles

### EROSION CONTROL BLANKETS

Erosion control blankets are ideal erosion control products for the short-term challenge of establishing vegetation in low to moderate erosion applications. Unlike loose fiber mulches, an erosion control blanket gives your project dimensional stability, locking seed and soil in place and protecting seedlings to promote faster vegetation growth and a stronger root system. Erosion control blankets are easy to install and are designed to degrade over specific periods of time depending on application requirements and project location. These geo textile solutions are comprised of either straw and/or coconut fibers or polypropylene yarns and fibers.

### TURF REINFORCEMENT MATS

The industry's most advanced solutions for applications require immediate, long-term erosion protection, vegetative reinforcement and water quality enhancement capabilities.

### NON-WOVEN GEOTEXTILES

Nonwoven Geotextiles are needles punched to form a strong fabric that retains its dimensional stability, adding years to the life of any roadway, railroad, landfill or civil / environmental engineering project.

### WOVEN GEOTEXTILES

Woven geotextiles filters soils, distribute loads, reduce rutting and extend the life of paved and unpaved roadways. Made from individual yarns woven together to provide dimensionally stable geotextiles, they are resistant to ultraviolet (UV) degradation and to biological and chemical environments normally found in soils.

### SOIL REINFORCEMENT GEOTEXTILES

Soil Reinforcement Geotextiles are specially designed for structural reinforcement in civil and environmental applications. They are used for reinforcing embankments over soft soils, steepened slopes, retaining walls, lagoon closures and landfill lining systems.

### PAVING PRODUCTS

Paving products are designed to extend the life of highways, city streets, parking areas and airport pavements. These easily installed interlayer products address specific pavement problems by providing a moisture barrier against water intrusion and a stress absorbing membrane to retard reflective cracking. They also lower the life-cycle cost of

pavements by improving performance and reducing maintenance.

### **SILT FENCE FABRIC**

Silt fence fabric offers a unique combination of ultraviolet (UV) resistance, strength and hydraulic properties, making them ideal for use in sediment control applications. When attached to wood or metal posts and properly trenched into the soil, silt fence fabrics contain overland flow and filter suspended soil particles from water. This not only allows the water to drain efficiently, it also prevents environmental damage to areas next to construction sites. Also as sediment accumulates, the fabric's high tensile strength, UV resistance and low maintenance features ensure continued performance throughout the entire life of the project.

### **GEOCELL**

The Geocell series consists of innovative, high-performance cellular confinement systems designed to enhance soil stability and improve the functionality of infill materials. Made from durable high-density polyethylene (HDPE), these geocells form a robust, three-dimensional honeycomb structure when expanded during installation. This unique design creates strong walls that hold specified infill materials in place, ensuring optimal compaction and long-term performance. Common infill materials include aggregates, vegetated topsoil, locally available soils, and concrete, making the CX Series a versatile solution for a wide range of applications.

### **POND LINERS**

### **GEOGRIDS**



**Address:** LP # 45 Saddle Road,  
San Juan, Trinidad, W.I.

**Phone:** (868) 675-5555

**Fax:** 1(868) 638-6302

**Email:** sales@scl-group.com

**Website:** www.scl-group.com

#### THE SOLUTION STORE (TRINIDAD)

**Address:** LP #52 Bhagoutie Trace, San Juan

**Phone:** (868) 299-0066 | (868) 299-0067

**Marabella:** #48 Taylor Street Marabella

**Phone:** (868) 291- 9745 | (868) 291-9785



**Address:** Lot 31 Industrial Estate,  
East Demerara, Guyana

**Phone:** (592) 227-6716

**WhatsApp:** (592) 608-5364

**Email:** sales-guyana@scl-group.com

**Website:** www.scl-group.com



**Address:** Block L, Sagicor  
Industrial Complex, 7 Norman  
Road, Kingston, CSO

**Phone:** (876) 938-1379

**Email:** sales@scl-group.com

**Website:** www.scl-group.com

#### THE SOLUTION STORE (JAMAICA)

**Address:** Lighthouse Salem, Runaway Bay,  
St. Ann

**Phone:** (876) 972-1969 | 930-0108

